

# Ladyfield

Engagement Report  
The Crichton Trust

December 2022

Commissioned by: The Crichton Trust

Prepared by: Collective Architecture  
4th Floor, Albert Chambers  
13 Bath Street, Glasgow G2 1HY

Revision:	Date:	Status:	Reason for Issue:	Checked:	Approved:
	18.11.22	DRAFT	For review	RA/SYS	
	06.12.22	DRAFT	For review	RA/SYS	
-	14.02.23	Information	Information	RA/SYS	CAL

## **1.0 INTRODUCTION**

- 1.1 Introduction
- 1.2 Community Engagement Framework
- 1.3 Our Engagement Plan

## **2.0 COMMUNITY ENGAGEMENT EVENTS**

- 2.1 Outline
- 2.2 Event 1- Understanding Ladyfield
- 2.3 Event 2- Community Bike Tour
- 2.4 Event 3- Evolving Ladyfield
- 2.5 Event 4- Future Ladyfield
- 2.6 General Outcomes

## **3.0 STAKEHOLDER ENGAGEMENT EVENTS**

- 3.1 Outline
- 3.2 Event 1- Understanding Ladyfield
- 3.3 Event 2- Stakeholder Surgeries
- 3.4 Event 3- Evolving Ladyfield
- 3.5 Event 4- Future Ladyfield

## **4.0 APPENDIX**

- 4.1 Consultation Boards Event 1
- 4.2 Consultation Boards Event 2
- 4.3 Consultation Boards Event 3

All Consultation Boards are available to view, download and read in more detail [ladyfield.info](http://ladyfield.info)

- **4 Community Engagement Events over 6 months.**
- **Stakeholder Workshops with key partners.**
- **A masterplan putting engagement at its heart.**
- **A dedicated project website for news and updates.**
- **An extensive and effective promotional campaign.**
- **More than 400 people attending our events.**
- **238 feedback forms filled in and collated.**
- **Responses shared with the community.**

- The project has reached the local community.
- Responses have shaped our Vision & Principles.
- Majority feel the process was open and transparent.
- Locals think their views have been considered.
- Feedback shaped and informed the masterplan.
- Most think the right amount of information was shared.
- Community say they now understand planning better.
- Public increasingly positive about future development.

# Introduction & Approach

This chapter provides an introduction and outline of the community engagement strategy for the project.

## **1.0 Introduction & Approach**

1.1 Introduction

1.2 Community Engagement Framework

1.3 Our Engagement Plan

01



## 1.1 Introduction

Over the past 25 years Collective Architecture have been industry leaders in community engagement; our practice was formed on the basis of extending participation in architecture. We engage with communities and stakeholders, not because we have to, but because we believe that collaboration is key to making well loved places.

We start every project by listening so that we clearly understand local sensitivities and opportunities. Developing a masterplan is complex and challenging. It requires a sensitive, flexible, and innovative approach to design and engagement. There needs to be strong, frank communication and a clarity of message at all times. Our team's approach to engagement for the Ladyfield site applied a set of well-tested key principles and actions as follows:

- Adopt a consensus building approach throughout.
- Build on the collective work and knowledge of the area, people and organisations.
- Actively embed engagement into the process and programme.
- Be mindful and respectful of the work that has taken place previously – and is still ongoing.
- Invite everyone, but in differing ways to suit their needs/input.
- Employ a variety of methods – digital, in-person, models, activities, newsletters etc
- Provide weekly Client reports/updates from our team.
- Ensure sufficient time for stakeholder engagement, the advertisement/ planning of wider public involvement and put in place client 'sign off' at key stages.
- Be concise and clear about information being shared – ensure flow of information goes out in a carefully managed and agreed way.
- Ensure regular and clear communication (written and graphic) at every step and milestone.
- Communicate Constraints and Opportunities at each step in the process.
- Be flexible, responsive and adaptable throughout the process.
- Be open, frank and honest at all times.

We are acutely aware of the previous and ongoing strategy work which has taken place to date within The Crichton Quarter and The Crichton Campus. It was therefore critical that the developed masterplan was clearly distinct yet aligned to this previous work which has been supported by different levels of engagement. Our approach sets out to avoid confusion locally, and still acknowledges how past work might inform, align and contribute to the success of any future development of the area.

## 1.2 Community Engagement Framework

There is no statutory framework or process for public consultation associated with the preparation of a masterplan. However there are National Standards for Community Engagement, which are endorsed by the Scottish Government and adopted by Dumfries and Galloway Council, and which our process aligned with.

We believe it is important that as many people as possible are able to participate in discussions around the future of their communities. Our approach is based on our previous experience of working on similar strategic and masterplan projects whilst developing a tailored methodology for engagement for the Ladyfield site.

Our approach was designed to:

- Present an accurate overview of the site's planning policy context.
- Articulate the reasons behind the masterplan proposals and the future planning and statutory processes associated with the masterplan including a timeframe for any proposed development
- Try and ensure widespread awareness of the potential development of the Ladyfield site in line with council LDP2.
- Create a mechanism through which both individuals and organisations could positively contribute to the process, taking cognisance that there are no active community councils within the local area.

### **Establishing a common starting point**

At the project outset we held an inception meeting with all key decision makers/client team associated with the project which established and agreed priorities and ambitions. This ensured that consensus was established from the outset so that our team was clear about the key issues going forward, the client team are aligned in their thinking, funding priorities and constraints can be established and, consequently, we can collectively communicate priorities with the wider community.

This will be particularly important given the previous studies for The Crichton Quarter and wider area. The design team members from Collective Architecture, RFB and Buro Happold bring a wealth of consultation experience alongside their broad, urbanism, landscape and planning/environmental consultancy.

Our team are 'active agents' in the process and also inform/shape process. What is critical in this process is ensuring that stakeholder and community comments are collated and fed back to everyone in a way that is fair, legible and clear – with evidence and facts presented alongside ideas, comments and opinions – and setting of clear priorities and outcomes.



The National Standards for **Community Engagement**

## 1.2 Community Engagement Framework

### **Draw up an engagement plan with the client team**

One of our team's first actions was to develop with the client team a clear and effective Engagement Strategy for all stages in the process. This aligns with the project programme and key milestones/outputs to ensure that communication of ideas, gathering of feedback and priorities are coordinated and managed between ourselves throughout the process. To do this, it is critical that the differing roles, knowledge and input required at each step of the way is clearly understood and communicated.

### **Only ask questions that consultees can influence with information that can be realistically delivered**

For the masterplan to be truly sustainable and beneficial it is critical that everyone in the vicinity of Ladyfield – and surrounding areas- can be involved in discussions and the design journey in some way. Differing communication methods are required to suit particular events or circumstances/work stage.

Our team employed a range of communication methods (digital and in-person, graphic and written) that ensured everyone could understand what was presented. This included;

- posters
- newsletters
- website
- models
- diagrams and 3D visualisations

The outcomes were then presented/reported back ('you said, we did' etc.) in way that is clear and legible at the next event.

### **Conduct focused Stakeholder Surgeries to establish where views align or differ**

We held a series of surgeries and intensive workshops to listen, gather and share information at key stages. These events at various project stages involved key stakeholders from across the local authority and external organisations. These were focused on a series of themes to identify key constraints and opportunities for Ladyfield and develop priorities and realistic aspirations.

Our wider consultant team actively participated to share and harness their expertise in discussions. In addition to these larger format events we had supplementary focused meetings with a variety of stakeholders on key themes and topics which supported the design development and aligned our approaches with national and local policy objectives.



A stakeholder surgery

### **Ensure comprehensive, balanced communication during the process – and manage expectations**

It is crucial that information about the project – and people’s input into that – is readily shared to demonstrate that the team are listening, and people’s ideas affect and influence the design – but that this is backed by sound technical and cost advice.

It is also important that expectations are managed, and this required priorities to be balanced and understood. Whether this be at stakeholder workshops or public events. We adopted a project specific website – ladyfield.info – and used this alongside traditional methods of posters, newsletter updates, newspaper advertisements and flyering. Consultation event boards were shared after events at venues within publicly accessible spaces at Crichton Central.

### **Demonstrate various technical ‘strands’ that will inform outputs at each stage**

It has been critical that the various challenges and ambitions across several areas are readily understood by all. We held an early Constraints and Opportunities workshop with our project team and client group to understand the issues openly and readily from the outset – and consider how to address going forward. Throughout the project the local community were instinctively drawn to the technical information and surveys that our team were preparing around transport, tree surveying and floor risk.

When discussing and viewing this type of information local people often shared their ideas and thoughts in an unguarded way and seemed to appreciate the balancing of issues faced by the design team and client. We aimed to be as open as possible in the sharing of technical information and this was firmly embedded into the process. This allowed us to positively engage with the community on key themes, to support local knowledge assumptions and to allow people to imagine possibilities in addition to the immediate lived experiences.

### **Be honest about expectations and ambitions**

We understand that any future development of Ladyfield will be complex and exciting. As a team we have worked to ensure that we are honest and frank in our discussions and presentation to the client team and beyond – so that communication and wider expectations can be readily managed and shared. Our team will work with Crichton Trust to adopt methods (some of which are outlined above and can be tailored to suit) that provide a level of transparency in the process and encourage involvement, understanding and clarity for all – regardless of their role and involvement.

### **Monitoring Strategy**

To demonstrate how the proposed engagement has impacted the proposals- the outcome as opposed to the ‘how’- our team have implemented a monitoring strategy to follow up on engagement at key intervals with our team and stakeholders. This engagement report concludes this monitoring strategy. Our engagement monitoring includes information such as number of respondents to questionnaires, attendees at events, no. of clicks / likes on social media, re-shares, visits to websites etc. Our strategy has allowed us to be nimble, flexible and adapt to feedback from residents to ensure our process was responsive to community views and experience of our events.

## 1.3 Our Engagement Plan

Our strategy for engagement set out a series of workshops and community events that provided opportunities to listen, co-design and present ideas in a collaborative, open environment. These ensured that local knowledge and experience were embedded into the creation of a distinct exemplar masterplan for the Ladyfield site.

### Who should be involved?

There are a large number of stakeholders and residents within The Crichton Quarter who rightly have a keen interest in how Ladyfield may be developed for the good of everyone. It is important that we contact and get as many as possible involved. Whilst we know The Crichton and its surroundings hold a special place in the life of Dumfries, our approach will seek to make the strongest connection with those most impacted by any future development of Ladyfield.

We will work with The Crichton Trust to reach out to residents in the vicinity of the Ladyfield site to ensure as many as possible participate in community events. Working with The Crichton Trust we have collated an extensive list of project collaborators, creating a Stakeholder Working Group encompassing but not limited to Dumfries & Galloway Council, South of Scotland Community Housing, South of Scotland Enterprise, NHS Dumfries & Galloway. The Crichton Trust led on connecting with the various groups and invited them to participate in each of our events.

### How would they be involved?

Our experience is that to meaningfully engage with communities we need to use a variety of methods and provide a clear, well published, calendar of events. To get the local community and stakeholders involved in the developing ideas for Ladyfield, we held the following series of events through the Summer months. These were arranged around three thematic events to allow the working up of design proposals collectively, with stakeholders and the community involved at all key stages. Within this programme, a further series of focused workshops – Stakeholder Surgeries- were held with the identified Stakeholder Working Group members around key topics affecting any future development.

These events were as follows:

1. Understanding Ladyfield, Constraints & Opportunities (Thursday 9th June)
2. Focused Stakeholder Surgeries (Thursday 30th June & Friday 1st July)
3. Evolving Ladyfield, Developing Proposals (Wednesday 24th August)
4. Future Ladyfield, Next Steps (Friday 14th October)

An additional event was added to the calendar from the original Engagement Plan, held on Saturday 16th July where the project team held a community bike tour visiting locations and different communities around the Ladyfield site.

# Love Ladyfield?



## Understanding Ladyfield Constraints & Opportunities

Thursday 9<sup>th</sup> June | 2.30pm - 6pm

## Evolving Ladyfield

## Developing Proposals

Wednesday 24<sup>th</sup> August | 2.30pm - 6pm

## Future Ladyfield

## Next Steps

Friday 14<sup>th</sup> October | 1pm - 6pm

**AT EASTERBROOK HALL**

# Community Engagement Events

This chapter provides an overview of the series of events held, the feedback gathered at each, and how this influenced the developing design.

## **2.0 Community Engagement Events**

- 2.1 Outline
- 2.2 Event 1- Understanding Ladyfield
- 2.3 Event 2- Community Bike Tour
- 2.4 Event 3 - Evolving Ladyfield
- 2.5 Event 4- Future Ladyfield
- 2.6 Outcomes



Public Consultation 1 - Constraints & Opportunities

## Ladyfield, The Clichton Quarter

# Recording My Views

We are keen to hear your views on the future development of the Ladyfield site and we have provided a range of places for you to record your views no matter how many or few you may have.

Please take time to read all the material and leave comments on the large floor maps, red for constraints and green for opportunities.

You can also provide comments by filling in one of our questionnaires provided and return to one of our coordinators or post, before 29th June 2022, to:

Ladyfield Project,  
Collective Architecture,  
4th Floor, Albert Chambers,  
13 Bath Street,  
Glasgow G2 3JF

## Next Steps

This public consultation event is the first of a series to be run through the development of a strategic masterplan for the Ladyfield site. We want you to participate as we develop the project to ensure that community views are at the heart of the future plans.

Engagement with the local community and key stakeholders will be critically important to the success of delivering a strategic plan that anticipates and enables for the opportunity to be truly sustainable and beneficial to the wider community in Ladyfield – and the surrounding area – can be realised in the future.

Our strategy for engagement will include a series of workshops and community events, hosted on the Clichton Estate, that will provide opportunities to share, co-design and present ideas in a collaborative and open environment. These will ensure that local knowledge and experience are embedded into the creation of a distinct, aspirational, sustainable local development condition within the Clichton Quarter for living, working, studying and recreation.

Scott's views will provide a two-way opportunity between the team and the wider public to create a shared understanding of the site and guide the principles for taking forward the strategic plan. Through the establishment of common goals and principles, a statement of vision, character and strategy for the development of Ladyfield will subsequently be created and shared publicly through The Clichton Trust.

All comments including a summary of the key issues and concerns raised will be collectively fed into the next stage of the masterplan process and the public consultation events scheduled for August and October.

Two future events are planned to share and discuss development proposals with the community, please put them in your diary:

**Evolving Ladyfield, Developing Proposals**  
Wednesday 24th August 2.30pm to 6pm at Easterbrook Hall

Our next event will focus on sharing and gathering feedback from the local community on the possible Strategic Site Options developed by the design team.

**Future Ladyfield, Next Steps**  
Friday 14th October, 1pm-6pm at Easterbrook Hall

The final event will focus on the future and next steps, through the presentation of the Strategic Plan proposals, sharing the final ideas for the future development of the Ladyfield site.

**Ladyfield Questionnaire**

Feedback Questionnaire

Comments:  Positive  Neutral  Negative

Questions

Section 1

Section 2

Section 3

Section 4

Section 5

Section 6

Section 7

Section 8

Section 9

Section 10

Section 11

Section 12

Section 13

Section 14

Section 15

Section 16

Section 17

Section 18

Section 19

Section 20

Section 21

Section 22

Section 23

Section 24

Section 25

Section 26

Section 27

Section 28

Section 29

Section 30

Section 31

Section 32

Section 33

Section 34

Section 35

Section 36

Section 37

Section 38

Section 39

Section 40

Section 41

Section 42

Section 43

Section 44

Section 45

Section 46

Section 47

Section 48

Section 49

Section 50

Section 51

Section 52

Section 53

Section 54

Section 55

Section 56

Section 57

Section 58

Section 59

Section 60

Section 61

Section 62

Section 63

Section 64

Section 65

Section 66

Section 67

Section 68

Section 69

Section 70

Section 71

Section 72

Section 73

Section 74

Section 75

Section 76

Section 77

Section 78

Section 79

Section 80

Section 81

Section 82

Section 83

Section 84

Section 85

Section 86

Section 87

Section 88

Section 89

Section 90

Section 91

Section 92

Section 93

Section 94

Section 95

Section 96

Section 97

Section 98

Section 99

Section 100

**Ladyfield Place Standard**

Place Standard

**Love Ladyfield?**

Understanding Ladyfield  
Constraints & Opportunities  
Thursday 27 June 12.30pm - 6pm

Evolving Ladyfield  
Developing Proposals  
Wednesday 24th August 2.30pm - 6pm

Future Ladyfield  
Next Steps  
Friday 14th October 1pm - 6pm

Opportunities for Ladyfield

Your comment here

Constraint for Ladyfield

Board outlining how to record your view & next steps

## 2.1 Outline

Exhibition panels were put on display for members of the public to view and make comment on at all events, tailored to the discussions planned for the day. The detail contained in the panels changed over the series of events as the masterplan for the site evolved.

The information presented generally included a location plan outlining the boundaries of the proposed site as identified by the Local Development Plan; an aerial photograph or similar graphic placing the site in a physical context within its immediate and wider surroundings; a brief description of the emerging proposals and process and associated planning background including the purpose of the public consultation; various architectural and landscape drawings, photographs and illustrations articulating the evolving design approach, new active travel routes, areas of public realm, vehicular and pedestrian access, car parking provision, open space and, specific advice on how to make comments including the provision of an indicative timescale associated with the masterplan proposals. The public consultation events and associated exhibition panels were designed to allow for evolution in the masterplanning process for the site.

At the events, public feedback forms were provided for visitors to complete and return. All events were well staffed by The Crichton Trust and the design team who were on-hand to answer queries and take verbal feedback. A postal address was given on the forms for those who wished to take the forms home with them and return at their convenience or provide their comments in writing. The forms were specifically designed to address what was considered by the project consultant team to be specific key issues associated with the site and the evolving masterplan proposals at each stage, and to be quick and easy to complete.

In addition, the project team kept a general note of all oral comments made at the events. Deadline dates were fixed for the receipt of completed feedback forms and comments concerning the proposals for the site following each set of events, in order that they could be considered and taken into account for the next set of public consultation events as the proposals and associated masterplan evolved. Comments received after the stated dates were accepted. No comments were time barred.

We ensured that all events took place over an extended timeframe throughout the afternoon and early evening, within an accessible venue on The Crichton Estate. All events were complimented with food and refreshments to ensure everyone felt welcome and able to take their time to explore the presented material and to engage with the design team. Handouts were provided, in accessible format, for all events where emerging design proposals were being presented to allow everyone access to the information relating to the masterplan proposals.

## 2.2 Event 1 - Understanding Ladyfield, Constraints & Opportunities

This event was held at Easterbrook Hall at The Crichton on Thursday 9th June 2022 from 1pm to 6pm. The event was attended by Collective Architecture, Raeburn Farquhar Bowen, South of Scotland Community Housing (SoSCH) alongside The Crichton Trust.

The opening event focused on what makes the site special in the eyes of stakeholders and the local community and ask people to reflect on the constraints and opportunities for any future development. This underpinned our shared understanding of the site and guided the principles for taking forward the strategic plan, through the establishment of common goals and principles.

In this regard, very little was presented in the way of detail of future proposals and the focus was primarily on understanding how the local community felt about the Ladyfield site and its potential future development. This allowed the design team and The Crichton Trust to test and build our understanding of issues affecting the site and the wider surrounding area from a local perspective and focused on a contextual analysis of the site, its history, site constraints and opportunities.

We provided a series of display boards outlining the information and initial thoughts from the consultant team under a set of headings which captured the key topics for discussion. We utilised a large aerial floor map, building blocks, props and post-it notes to provide interactive and physical ways to explore and comment on local knowledge of the site. This first event focused on listening and understanding and led to the production of a clear 'Mission Statement' outlining the Vision & Principles which would underpin the design work to be developed.

**We asked all respondents where they had come from on the day, and to provide up to three answers to the following questions. We also provided space on the rear of the sheet for further feedback.**

“ How do you think any development of the Ladyfield site could improve the local area and how you use it? ”

“ What are the important things that you think should be protected in any development of the Ladyfield site? ”

33 feedback forms were received from a high turnout of attendees. Key themes which emerged from the feedback were:

- Most responses came from residents within the Castledykes area.
- Respondents suggested that any form of development would be detrimental to the area.
- Whilst a number of residents noted a preference for no development on the site at all, there was a common theme that any development that does occur should retain green space and wildlife within the Ladyfield site.
- The majority of respondents valued the extensive woodland and historic trees within the Ladyfield site. There was a strong desire to see these retained.
- Respondents strongly valued the biodiversity and wildlife within the site and highlighted the extensive range of habitats they believe are present, including deer and bats.
- There was a common theme that the number of homes allocated within the LDP2 was too many for the site.
- There was a significant public misconception that a conservation area meant no development could occur.
- Respondents highlighted their concern at the number of vacant or derelict sites within the wider town context and that they wanted to see these developed.
- A minority of respondents highlighted concerns of more traffic.
- There were a number of responses which suggested they would support development if the buildings and open spaces were of similar quality to The Crichton.

- Responses from those from elsewhere in Dumfries or somewhere else were significantly more positive and highlighted how development could provide jobs, improve connections and help to meet local affordable housing need, particularly for those with care needs.

Verbal feedback received by the design team on the day aligned closely with the written responses. A number of people suggested that information and events could be more accessible and this was reflected upon by the design team and The Crichton Trust following the event.

The outcome from this event, in tandem with the parallel Stakeholder Event, was the development of a project 'Mission Statement' outlining a bespoke 'Vision' for any future development of Ladyfield and guiding 'Principles' against which the masterplan would be measured.

Thursday 9th June 2022

Ladyfield Workshop 1

### Feedback Questionnaire

Name (optional): \_\_\_\_\_

Where did you come from today (optional):  
 Castledykes  Kingholm Quay  Elsewhere in Dumfries  Somewhere else

Please use the spaces below to write your comments and opinions.

This opening event will focus on what makes the Ladyfield site special in the eyes of stakeholders and the local community, and will reflect on the constraints and opportunities for any future development.

This will help shape our understanding of the site from local knowledge and establish a set of common goals and principles for taking forward a strategic plan for any future development of Ladyfield. Following on from this event, the design team will produce a Mission Statement covering Vision, Character & Strategy which will guide the proposals for the development of Ladyfield.

**Question 1**

How do you think any development of the Ladyfield site could improve the local area and how you use it?

1. \_\_\_\_\_
2. \_\_\_\_\_
3. \_\_\_\_\_

**Question 2**

What are the important things that you think should be protected in any development of the Ladyfield site?

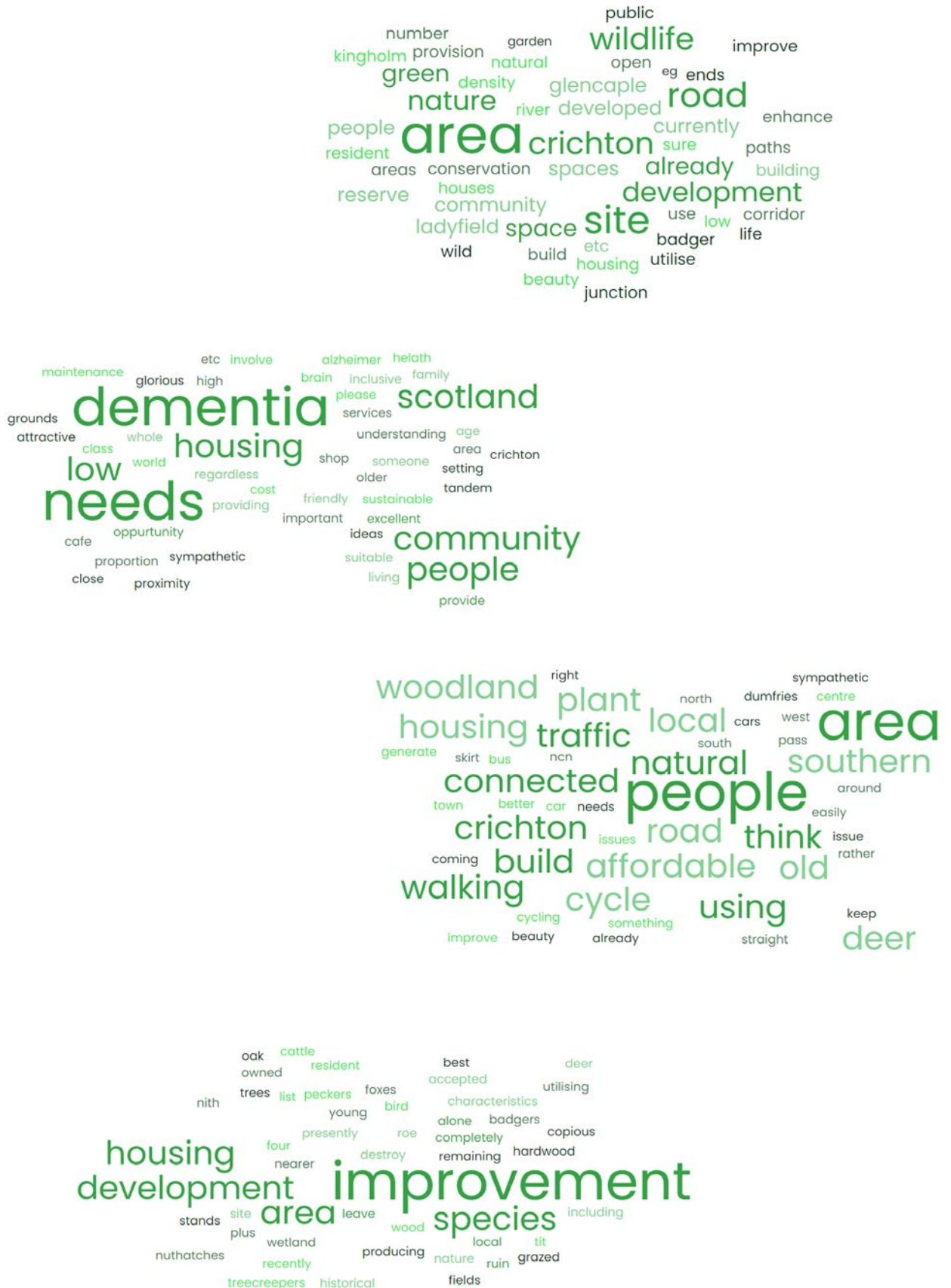
1. \_\_\_\_\_
2. \_\_\_\_\_
3. \_\_\_\_\_

Thank you for taking the time to attend the public consultation event and for filling in this questionnaire. Your views and comments are extremely important to shaping and developing this exciting project.

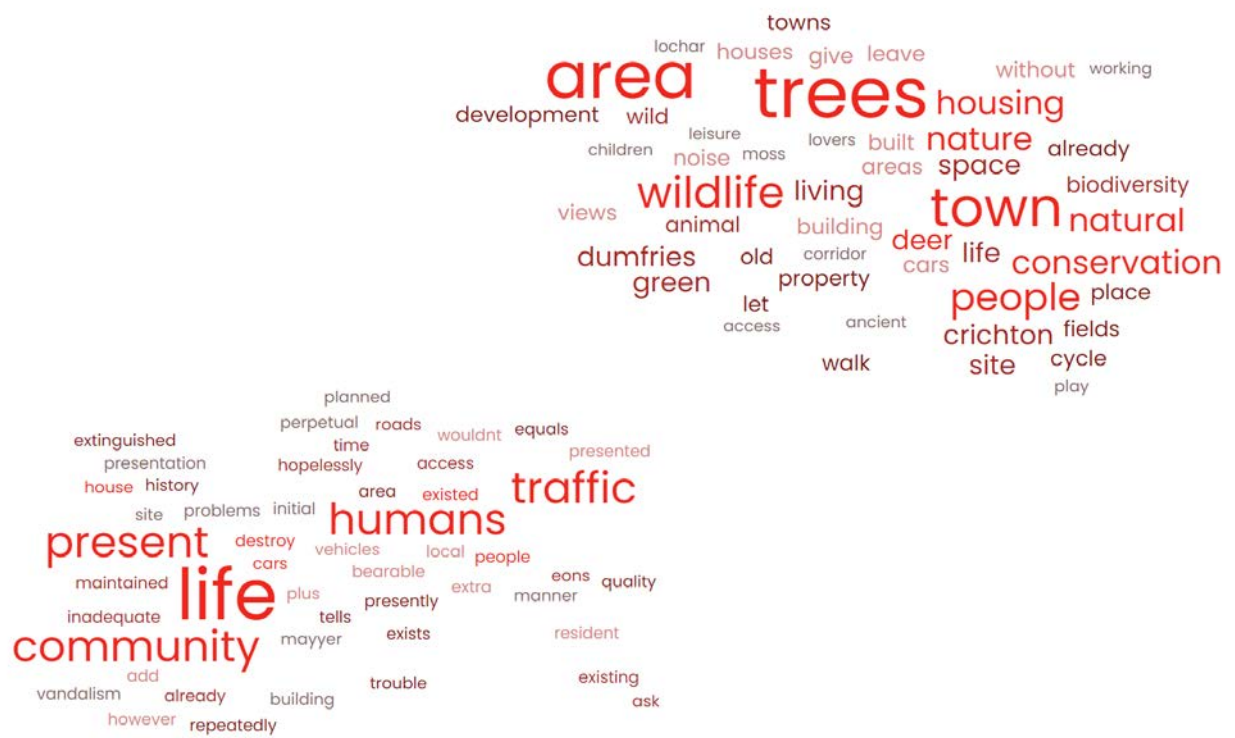
Please hand in your completed form to one of our colleagues or post, before 30th June 2022, to: Ladyfield Project, Collective Architecture, 4th Floor, Albert Chambers, 13 Bath Street, Glasgow, G2 1HF

**COLLECTIVE ARCHITECTURE**

## 2.2 Event 1 - Understanding Ladyfield, Constraints & Opportunities



Word clouds exploring how development could positively impact Ladyfield



## 2.3 Event 2 - Community Bike Tour

This event was held around the Ladyfield site on Saturday 16th July 2022 from 10am to 5pm. The event was attended by Collective Architecture, Raeburn Farquhar Bowen, South of Scotland Community Housing (SoSCH) alongside The Crichton Trust.

Following feedback at the first community consultation event that the location and weekday hosting of events at Easterbook Hall may be difficult for some local residents to attend, the design team and The Crichton Trust responded by holding an additional community bike tour to reach out to all areas around the Ladyfield site across the course of a Saturday. This event was well publicised in local press, by The Crichton Trust through their digital platforms, via email invites and was shared by the unconstituted 'Save Ladyfield' group on their Facebook page.

The tour involved taking a cargo bike with mobile display of the emerging 'Vision & Principles' to six locations around the Ladyfield site:

10.00am -10.45am	Glencaple Avenue at Glencaple Road
11.00am - 11.45am	Kingholm Road, Allotment Entrance
12.30pm - 1.15pm	Kingholm Quay Community Centre
2.00pm - 2.45pm	McAllister Way Play Park
3.00pm - 3.45pm	Well Green at Glencaple Road
4.15pm - 6.00pm	Easterbrook Hall Car Park

In addition to the presentation of the project 'Vision & Principles' as a display, small, accessible flyers were provided to those in attendance. Furthermore feedback forms were made available, however no forms were received completed on the day.

The bike tour was well attended throughout the day, with stops at Glencaple Avenue and Kingholm Quay Community Centre most heavily attended. Some people attended more than one stop. The format of the tour allowed the design team to see and hear the views of residents first hand, in their localities. This provided a clear understanding of the nuanced issues affecting each area around the Ladyfield and the

distinctiveness of the varying places.

Many similar themes ran through the day, primarily, retaining the natural setting (for the community), the impact of increased traffic, concerns about flooding and concerns about over development (based on 490 dwellings capacity in LDP).

There was a large amount of misinformation and misunderstanding of the aims and objectives of the Crichton Trust. This was increased by individuals who visited numerous separate stops.

A general theme that emerged was that residents felt more could be done to support the regeneration of the town centre despite discussions on how development at the Crichton / Ladyfield can be supportive of the aims of town centre regeneration projects such as at The Midsteeple Quarter.

There was a broad agreement that the site should be developed for recreation as 'wild landscape' supporting ecological diversity.

Some of the displayed Vision & Principles such as intergenerational living, active travel, addressing climate change, and the circular economy were met with curiousness and reasonable positivity, however this was wrapped up in wariness that it was 'pie in the sky', 'too good to be true' etc.



Photographs of the Community Bike Tour

## 2.3 Event 2 - Community Bike Tour

Matters raised and discussed with attendees focused around key themes which varied at each stop:

### Stop 1 Glencaple Avenue at Glencaple Road – Attended by approx. 15 people

- Concerns raised over increased traffic volume on Glencaple Road. Scepticism towards any proposed methods to reduce cars e.g car clubs.
- Ecological impact, concern about the deer / other wildlife on the site.
- Concerned about the impact of any development on the trees.
- Flooding issues, queries about surface water and potential increase in flooding from development.
- Some queries on the process as a whole, the local development plan etc. Residents were unclear on the process employed by the council in preparing, consulting and adopting local development plans and where this sits within the overall planning system.
- Residents enjoyed The Crichton's natural setting and wanted to see that continued within the Ladyfield site.
- Some general mistrust of the Council & the processes they employ across a number of areas.
- Queries on the number of dwellings to be proposed, particularly in light of reports in local press suggesting 500-700 new homes.
- Question about how to develop in a heritage setting, and how proposals could be in keeping, questions about materiality. Questions focused on what a conservation area was and what this meant for development.
- Residents were cynical of the transport survey being undertaken and suggested they would challenge the outcomes this provided. Misinformation on when this was undertaken seemed to have passed across all groups attending each stop.

### Stop 2 Kingholm Road at Allotment Entrance – Attended by approx. 6 people

- Increased traffic volume on Glencaple Road and Kingholm Road would not supported.

- Flooding issues highlighted at Kingholm Road.
- One resident, former chair of local community council, displayed scepticism about the engagement process and queried council involvement in proposals.
- One resident strongly supportive of general ambition but not at this location, felt the town centre should be prioritised.
- Capacity and impact on local amenities queried, particularly the local school.
- Upon discussing homes that are more flexible, the option to age well in one's local community was supported.
- Idea to reduce volume of cars was tabled with car clubs etc, idea was met with some scepticism.
- Concern around construction and construction traffic on the site and the timescales this involved.

### Stop 3 Kingholm Quay Community Centre – Attended by approx. 15 people

- Impact on local services such as dentist etc were raised with long waiting lists cited although it was acknowledged that providing key worker housing on the Ladyfield site could help mitigate these issues.
- Flooding issues suggested, particular in relation to Kingholm Quay, the river and dock.
- Some queries on the process as a whole, the local development plan etc. that mirrored those at Stop 1.
- General mistrust of the council & their processes.
- Queries on the tenure & dwelling types proposed.
- Queries on the numbers proposed and how these could be accommodated and retain features like trees.
- Question raised about the impact of water at Kingholm Quay, and the sluice /dam arrangement.
- Question about capacity & impact on local school & healthcare.
- The need for key worker housing discussed and how to attract people to the area.

- Worry about any acoustic impact on the existing peaceful setting particularly during construction.
- High levels of scepticism displayed by residents of McFarlane Avenue whilst those at Kingholm Quay showed less concern with possible development.
- Residents suggested that Dumfries was a great town but had suffered in recent years – particularly in the town centre – with little opportunities for young people.
- Interest in shown in community housing and how this is proposed, developed and delivered.

**Stop 4 McAllister Way – Attended by 1 person**

- Concern around development of the Ladyfield site generally even though allocated for housing.
- Discussion on the aim to promote greater active travel routes, some cynicism that this would be embraced by existing residents although person in attendance did walk frequently into town across a number of routes around the Ladyfield site.

**Stop 5 Well Green – Attended by 4 people**

- One resident accepted site would be developed at some point and was interested to hear approach to be taken here and how this diverged from the typical developer approach.
- Agreed Glencaple Road was not pleasant for pedestrians, particularly concerned about speed.
- Used The Crichton most days and was interested in improved connections across Glencaple Road.
- All residents were keen to understand the impact on their existing view which should be safeguarded.
- Interested in the condition & heritage of the trees, wanted to see these retained.
- Strong support for the existing use of the site as arable land, particularly in light of global grain shortages.
- Responded well to suggestion of pedestrian connections across the site.
- Showed interest in potential to connect their homes into new mains drainage and district heating networks.

**Stop 6 Easterbook Hall – no attendees**

Following on from the bike tour the design team identified a number of actions to be considered prior to the next public engagement event. These were:

- Speaking to a plan & set of sketches will be useful to address many of the local concerns.
- Support from external survey material, tree surveying, traffic survey etc. will be valuable to evidence to residents so that they have clear understanding of the process and information gathering that has been undertaken.
- Illustrating the specifics of how some concerns, eg. tree retention, will be addressed will be important.
- Setting out the process will be useful, and to explain how locals fit into the planning process and when they can support or object to proposals.

# Love Ladyfield?

Saturday 16th July 2022

Meet The Crichton Trust and Collective Architecture as they tour the communities around Ladyfield to hear what matters to you locally.

This is your first chance to see our commitments for a future Ladyfield and help influence the masterplan.

Look out for us across Ladyfield, we'll be on our bike!



- 10.00am to 10.45am**
  - 1 Glencaple Avenue at Glencaple Road
- 11.00am to 11.45am**
  - 2 Kingholm Road at Allotment Entrance
- 12.30pm to 1.15pm**
  - 3 Kingholm Quay Community Centre
- 2.00pm to 2.45pm**
  - 4 McAllister Way Play Park
- 3.00pm to 3.45pm**
  - 5 Well Green at Glencaple Road
- 4.15pm to 5.00pm**
  - 6 Easterbrook Hall Car Park

**Save the Date for Evolving Ladyfield**  
 Wednesday 24th August 2022 Easterbrook Hall 2.30pm to 7pm  
 Your opportunity to see the developing masterplan proposals and give your feedback.



## 2.4 Event 3 - Evolving Ladyfield, Developing Proposals

This event was held at Easterbrook Hall at The Crichton on Wednesday 24th August 2022 from 1pm to 7pm. The event was attended by Collective Architecture, Raeburn Farquhar Bowen, Buro Happold, South of Scotland Community Housing (SoSCH) alongside The Crichton Trust.

The length and format of the event, as well as the format of feedback questionnaires, were shaped by feedback received at the first public event with all display information provided in an accessible format with accessible handout provided for those who requested this.

This event allowed the design team and The Crichton Trust to present initial conceptual ideas for the Ladyfield site for comment in respect of how the masterplan would approach landscaping, protecting heritage and landscape assets, approach to transport and infrastructure, approach to location of development zones and the suggested house types and numbers proposed. These had been arrived at following detailed consideration of the public feedback from the first two events as well as a number of sessions with key stakeholders.

We provided a series of fourteen display boards outlining the information and developing design ideas from the consultant team under a set of headings which captured the key topics for discussion. We utilised a large aerial map to allow people to support discussion, and created a journey around the display boards to allow attendees to take in the extensive amount of information on show.

The presentation boards covered the following topics:

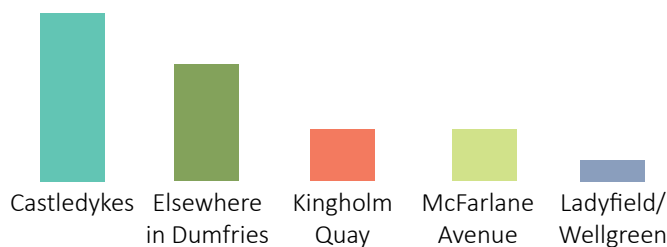
- Explanation of who The Crichton Trust and the design team are and what the masterplan aims to achieve.
- An explanation of the LDP2 context and timeline explaining the recent history of the Ladyfield site.
- Vision & Principles for Ladyfield.
- An outline of how the engagement feedback has shaped the emerging proposals.
- Emerging ideas for transport and infrastructure within and outwith the site.
- How the proposals seek to improve connections within Ladyfield and encourage better active travel options.
- How the site will seek to enhance and retain biodiversity within the site.
- How the masterplan will embed the protection of the existing trees.
- The masterplan approach to landscape and placemaking.
- The masterplan approach to homes and community and how these address local housing need identified in study work by SoSCH.
- The proposed house types and approach to placement on the site.
- How the new homes will be heated and what infrastructure is proposed.
- How the future development might look and what the next steps in the masterplan process are.

“ I am very pleased to see that the views of community here been taken on board. ”

Attendees were also provided with feedback questionnaires allowing them to provide comments back against a number of topical questions. As part of this process we also gathered information on the demographics of those attending, including where they came from, their age profile and how long they have lived in the area.

This event was attended by a total of 113 people (53 arrived between 2-3pm; 22 arrived between 3-4pm; 16 arrived between 4-5pm; 8 arrived between 5-6pm; and 14 arrived after 6pm). Of those attending we received 64 completed questionnaire responses.

Of those who responded in the available feedback forms, 50% were aged over 65 with the only 3% of responses coming from those aged under 35. More than half of respondents had lived in the area for over 20 years with 82% having lived locally for more than 10 years. 95% of respondents owned their own home. As with the initial engagement event most attendees identified as coming from the Castledykes area (39%).



Most people attending the events came from Castledykes and the majority of these people have lived locally for over 20 years.



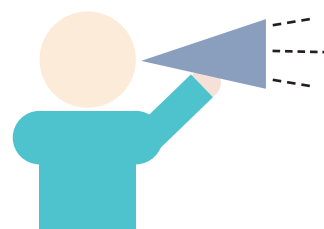
After seeing the developing ideas at the last event, the average response was 5 on a scale of 1 to 10

Most responses came from those aged over 65



Only 2 responses came from those under 35

57% of respondents from the last event felt more positively than negatively about the emerging plans



113 people attended the consultation

## 2.4 Event 3 - Evolving Ladyfield, Developing Proposals

**“ Very positive reaction to the proposed style of buildings in relation to their landscape. Preserving the green space to match the Crichton site is very innovative. Very exciting proposition and definitely would create a benchmark for future developments. ”**

Of those attending the event, a majority came from households with 1 car or fewer (66%) dispelling the held view that most homes require provision for more than one car parking space, despite current challenges around active travel and public transport identified locally.

The responses highlighted that there is a fairly balanced view to many of the proposed changes, with support for the proposed path network and traffic calming measures suggested in the developing proposals. These show that the masterplan is beginning to tackle a number of the challenges presented through the initial engagement events around transport and traffic around the Ladyfield site. The responses to making more use of public transport and to car clubs is perhaps a consequence of the demographics of the respondents and peoples experience, or lack thereof, of the provision of these within Dumfries and Galloway.

As anticipated there were still concerns over the number of homes proposed for the development despite the presentation suggesting unit numbers in the region of 300 rather than the LDP allocation of 489.

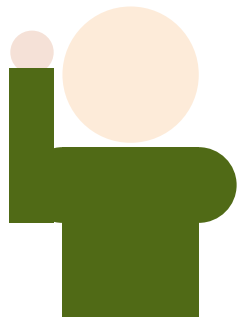
In addition to the questions above respondents were asked to note against a scale of 1 to 10 how they felt, in light of the presented material, about potential development at Ladyfield (with 1 being very negative and 10 being very positive). On this scale the average response was 4.7, representing again that views are balanced between positive and negative.

Verbal feedback received by the design team on the day aligned with the written responses received and also followed similar themes to previous events. Although negative views were represented to members of the design team these were well balanced by a number of people noting that proposals were innovative and addressed a number of concerns or preconceived ideas they had arrived with.

A number of those attending the event approached the design team throughout the day with erroneous, or misleading, information that had been heard around the adjacent communities. Much of the negative commentary focused on the allocation of the site in the LDP2 and points raised at previous events relating to brownfield sites being available for development in the town, flooding, traffic concerns and biodiversity being harmed by development.

Of those expressing positive views on the development a number of people were very enthusiastic about the intergenerational nature of the proposals and how the proposals carefully protect the existing landscaping/trees within the Ladyfield site.

**Support was also expressed over how the proposals could support the future sustainability of the local primary school, could improve provision the of key worker housing and could provide a benchmark for future developments in the region.**

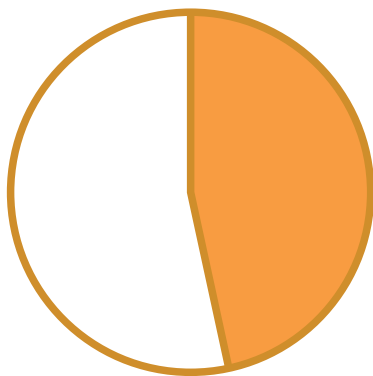
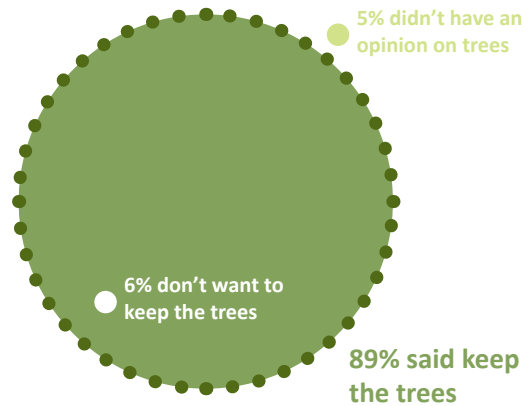


1/4 of people said they would volunteer to support the wilder land

40% think the proposals are already addressing issues raised by the local community



2/3 of existing households have one car or fewer



Less than half felt the number of homes proposed for the site was inappropriate



Half said they would use the proposed path network



About half supported the proposed traffic calming measures

## 2.5 Event 4 - Future Ladyfield, Next Steps

This event was held at Easterbrook Hall at The Crichton on Friday 14th October 2022 from 1pm to 7pm. The event was attended by Collective Architecture, Raeburn Farquhar Bowen, South of Scotland Community Housing (SoSCH) alongside The Crichton Trust.

The length and format of the event, as well as the format of feedback questionnaires, were shaped by feedback received at the previous public events whilst also looking to act as a 'rounding up' of the community feedback on proposals. As previous events all display information was provided in an accessible format with an accessible handout containing key information provided for those who requested this.

This event allowed the design team and The Crichton Trust to present the more developed proposals for the Ladyfield site which took into close account the comments, feedback and prioritise identified by the community and stakeholder as the project had been developed. The design team also presented back to the community the key statistics and feedback gathered to date to show how their views had informed the masterplan and development framework proposals.

This final event acted as a clear closing of the masterplan engagement series and the design team supplemented the information about the masterplan with a captioned short film which clearly outlined the purpose of the project, what the next steps were and how the public could continue to engage with the future planning process - either to support or object to any subsequent planning application on the site.

New information was presented on six boards which showed the masterplan in context alongside a series of character study images for the proposed character zones.

The presentation boards covered the following topics:

- Explanation of what the masterplan aims to achieve and what happens next.
- Feedback on the masterplan and how this has influenced the proposals.
- Masterplan site layout drawing for Ladyfield.
- An explanation and imagery of Character Zone 1.
- An explanation and imagery of Character Zone 2.
- An explanation and imagery of Character Zone 3.

In addition we also provided all fourteen display boards from the previous event so that those who had only attended this final event could see how the proposals had been developed and the guiding principles behind the emergent masterplan and character study imagery.

Attendees were also provided with feedback questionnaires allowing them to provide comments back against a number of topical questions. As part of this process we again gathered information on the demographics of those attending, including where they came from, their age profile and how long they have lived in the area.

This event was attended by a total of 92 people (10 arrived between noon and 1pm; 35 arrived between 1-2pm; 16 arrived between 2-3pm; 16 arrived between 3-4pm; 12 arrived between 4-5pm; 8 arrived between 5-6pm; and 5 arrived after 6pm). Of those attending we received 53 completed questionnaire responses.

“ The community were never consulted about whether they even wanted a housing estate on this important wildlife area. ”

“ The design team have done a fantastic job and, if a development were to go ahead, this is the way to do it. ”

Verbal feedback on the day noted that the introductory film provided a clear and straightforward explanation of the project and outlined in simple steps how the masterplan will and could develop into the future.

Like previous events there was a distinction between those ardently opposed to development of any kind and those who strongly supported the aims and ambitions of the masterplan. Uniquely to this final consultation event there were few who were in the middle of these two polar positions on any development.

In written feedback received a broad range of views were provided, however it was noted a number of feedback forms were completed in the same handwriting which suggests an attempt to skew the quality of the information being gathered by the design team.

Of those attending the event the demographic was again dominated by older residents with only two completed responses coming from those aged under 35. As previously the respondents had largely lived in the local area for over 20 years.

62% of respondents had attended one of the previous consultation events in the series with those

in attendance most likely to have attended the events held at Easterbrook Hall. Those responding said they had heard about the event across the full range of advertisements provided by the design team and The Crichton Trust, with flyering of adjacent homes particularly successful in reaching people.

Around a quarter of respondents felt the design team had addressed the main concerns of the community, half felt the concerns weren't addressed and a quarter did not answer.

**60% of those responding either strongly agreed or agreed that the engagement events have been open and accessible to the local community with only 15% disagreeing or strongly disagreeing.**

When asked whether the design team have provided the right amount of information and detail about the proposed masterplan, a majority of respondents (52%) said that this was “about right”.

Respondents were evenly split when asked if the design team had responded to community feedback in the development proposals, with “undecided” being the most common response. Around a third agreed and disagreed with this statement which reflected the balanced verbal feedback received on the day.

## 2.5 Event 4 - Future Ladyfield, Next Steps

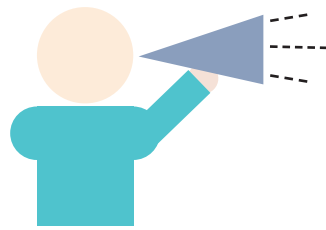
More than half (52%) of those responding agreed or strongly agreed that they now understand the Local Development Plan, Masterplan and Planning Process better than they did before. This should be viewed as a real positive outcome from the series of engagement events and testament to the design team and The Crichton Trust to ensure that the community are engaged with the longer term planning process any development needs to go through. This majority also highlights positively that people are more engaged, productively, in the planning process whether they support or oppose the principle of development at Ladyfield.

When asked whether they were likely to support or object to a future planning application on the Ladyfield site, 45% of respondents noted they would likely object whilst 28% said they were likely to support it.

The design team again asked the respondents to note against a scale of 1 to 10 how they felt, in light of the presented material, about potential development at Ladyfield (with 1 being very negative and 10 being very positive). On this scale the average response was 4.5, representing again that views are balanced between positive and negative. As suggested above, it should be noted that a number of forms with the same handwriting provided a response of "1" which may have skewed the average response downwards.

“ A lot of thought has been given to the feedback provided. ”

“ This plan seems to me to be a model for the kind of living I would like to share with my neighbours. With all good wishes for success in the development of plans for the site. ”



92 people attended the consultation

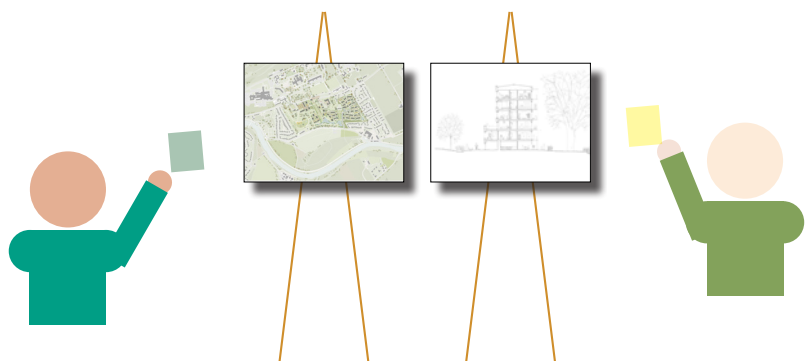
More than half say they now understand the planning process better than before



Respondents were evenly split on whether proposals address issues raised by the local community



60% of respondents strongly agreed or agreed the engagement events were open and accessible.



52% said the design team had provided the right amount of information and detail about the proposed masterplan

## 2.6 General Outcomes

Throughout the engagement process with the community we have looked to provide ongoing commentary on how we have listened and responded to feedback. This has been embedded in each event and the material presented in the form of a series of “you said, we did” explanations. The key outcomes are highlighted here.

### You said, we did...

You said...

The site should be left as a biodiverse wild landscape for nature to thrive.

We did...

We have minimised development pockets to maximise the amount of biodiverse open space for communities to enjoy.

You said...

The development of the site will have a negative impact on the roads around the site.

We did...

We have carried out junction performance surveys to check there is sufficient capacity. Speed modelling has helped us understand where interventions on Glencaple Road can improve traffic flow and reduce speeds.

You said...

The site floods and development will have a further negative impact.

We did...

A water management strategy will better the existing condition, capturing and slowing water through swales and rain gardens to reduce pressures on the public sewer.

You said...

The development of the site to meet the LDP allocation for 489 units will have a negative impact on the natural quality.

We did...

We propose to retain the natural landscape assets and open up these up for the community to enjoy, by reducing the extent of development to up to 350 new homes.

You said...

It was important to understand the opportunity to be involved in the process and provide feedback.

We did...

We hosted an informal consultation tour to update on the process, established a website uploading material from each event, and extended consultation hours.

## You said, we did...

**You said...** Traffic calming proposals for Glencaple Road are supported but should be replicated on Kingholm Road.

**We did...** We have incorporated suggestions for traffic calming measures to be located at key locations on Kingholm Road and extended those on Glencaple Road to reduce speeds.

**You said...** Brownfield sites around Dumfries should be brought back into active use.

**We did...** We have looked to develop the Ladyfield masterplan to provide as much opportunity as possible for Ladyfield East and Ladyfield West to be connected into future plans.

**You said...** Development of the Ladyfield site can help to support the long-term viability of the local schools.

**We did...** We have proposed changes in the local roads network to provide safer and more accessible routes to school from the Ladyfield site.

**You said...** Any new homes should reflect the architectural character and quality of The Crichton.

**We did...** Our Ladyfield Housing Pattern Book will lay out principles for new housing to have a strong character, an appropriate scale and utilise local materials and skills.

## 2.6 General Outcomes

From the project inception a dedicated Ladyfield project website was setup to provide information about the masterplan process, updates the community on the progress of the work of the design team and to share how people could engage positively in shaping the proposals.

[www.ladyfield.info](http://www.ladyfield.info) provides everyone with an accessible place to learn more about the Ladyfield project with pages outlining the following:

- About the Project, its background and the Local Development Plan Allocation.
- Project Timeline providing links to key dates, documents and resources.
- Project Updates and Events providing a calendar of upcoming and past engagement events.
- How to Engage offering the public information on how they can influence the masterplan proposals.
- Contact Page on how to get in touch with The Crichton Trust.

The website has also acted as a repository of all the engagement events, providing open access to all presentation material provided at each individual event held by the design team over the project duration. These are available to download as PDF documents alongside feedback forms associated with each event and a date these should be submitted back for inclusion in data gathering.

The website has had over 3000 individual visits, with the Project Updates/Events page the most visited.

Following the conclusion of the masterplan process the [www.ladyfield.info](http://www.ladyfield.info) page will become a holding place for the final documentation and appendices which will be in the public domain.

# Love Ladyfield?

- [Home](#)
- [About The Project](#)
- [Project Timeline](#)
- [Project Updates/Events](#)
- [How to Engage](#)
- [Contact us](#)



## Ladyfield: A 21st Century Village

The development of a master plan for the Ladyfield site will mark a further important milestone in the evolution of The Crichton Quarter into an integrated, nationally significant sustainable 21st Century Village.



Project Updates and Events

[More Info](#)



How To Engage

[More Info](#)



## Subscribe

Sign up with your email address to receive news and updates.

# Stakeholder Engagement Events

The following chapter provides an overview of the series of focused stakeholder engagement events run in parallel to the Community Engagement Events.

## **3.0 Stakeholder Engagement Events**

- 3.1 Outline
- 3.2 Event 1- Understanding Ladyfield
- 3.3 Event 2 - Stakeholder Surgeries
- 3.4 Event 3- Evolving Ladyfield
- 3.5 Event 4- Future Ladyfield



## 3.1 Outline

In parallel to the Community Engagement Events, we ran a series of focused stakeholder engagement events. These events allowed the design team to work openly and collaboratively with key stakeholders in the Ladyfield site and these followed a similar timeline to the series of publicly focused events.

The stakeholder programme of events were as follows:

1. Understanding Ladyfield, Constraints & Opportunities (Thursday 9th June)
2. Focused Stakeholder Surgeries (Thursday 30th June & Friday 1st July)
3. Evolving Ladyfield, Developing Proposals (Wednesday 24th August)

The ambition of all these events was to provide an open environment for the discussion of ideas, sharing of knowledge and experience, expert input and to ensure alignment of the masterplan principles and design decisions with the strategic policy objectives of local, regional and national policy makers. These surgeries and events, alongside a series of more informal design development discussions with relevant parties, have provided a fruitful and supportive sounding board for the emerging masterplan proposals. In the same way the approach has been shaped by community engagement so it has by the engagement from these stakeholders, ensuring that proposals remain innovative and ambitious but grounded in the wider policy context moving towards NPF4 and Net Zero.



## 3.2 Event 1 - Understanding Ladyfield

This event was held at Easterbrook Hall at The Crichton on Thursday 9th June 2022 from 10am to 1pm. The event was hosted by Collective Architecture, Raeburn Farquhar Bowen, South of Scotland Community Housing (SoSCH) alongside The Crichton Trust.

Stakeholders in attendance were:

- Dumfries & Galloway Council Roads
- Dumfries & Galloway Council Active Travel
- Dumfries & Galloway Council Waste Management
- Dumfries & Galloway Council Ward Officer
- Dumfries & Galloway Council Education
- South of Scotland Enterprise (SOSE)
- Dumfries & Galloway Health & Social Care Partnership (DGHSP)
- The Scotland 5G Centre

This opening event focused on what makes the Ladyfield site special in the eyes of stakeholders and the local community, and will reflect on the constraints and opportunities for any future development. This information gathering underpinned our shared understanding of the site and guided the principles for taking forward the strategic plan, through the establishment of common goals and principles. The outcome of this event will be the development by the design team of a Mission Statement covering Vision, Character & Strategy for the development of Ladyfield.

Following the presentation of a series of boards explaining initial research about the site, its history, heritage and landscape character small groups were formed for round table discussions which collectively drew out a series of defining 'Constraints and Opportunities' against a set of headline topics, with each topic discussed for around 25 minutes in a quick round table format. The groups were supported by a series of discussion prompts to aid conversation and to make the most of the time each group had.

Feedback from these discussions was gathered back together and shared to draw out the key themes from our discussions.

The topics for discussion were:

- Movement and Access
- Landscape and Natural Setting
- Character and Placemaking
- Housing and Community



### 3.3 Event 2 - Stakeholder Surgeries

This event was held at Easterbrook Hall at The Crichton over two days on Thursday 30th June 2022 and Friday 1st July 2022 from 10am to 5pm. The event was hosted by Collective Architecture, Raeburn Farquhar Bowen and Buro Happold alongside The Crichton Trust.

#### Day 1 - Thursday 30th June

- Dumfries & Galloway Council Roads/Active Travel
- Dumfries & Galloway Council Environment/Ecology
- Dumfries & Galloway Council Property
- Dumfries & Galloway Council Ward Officer
- Collective Architecture, RFB, Buro Happold

#### Day 2 - Friday 1st July

- Dumfries & Galloway Council Planning
- Dumfries & Galloway Council Strategic Housing
- Midsteeple Quarter
- South of Scotland Enterprise (SOSE)
- The Scotland 5G Centre
- Scottish Futures Trust
- Collective Architecture, RFB



The surgeries presented the design team, The Crichton Trust and key stakeholders with an opportunity to discuss strategies and principles to development in a safe and open environment without prejudicing potential masterplan proposals.

Before starting on both days an introduction was provided by The Crichton Trust about the project background and aspirations which was followed by Collective Architecture outlining the Vision & Principles for Ladyfield which had been developed following the initial consultation and stakeholder events in June. These set the scene for the broader topical discussions which brought in the policy and strategic expertise of those present from key stakeholder groups.

The morning session on Day 1 focused broadly on the topics of Landscape and Placemaking with significant reference made to the heritage asset value of the existing landscape character of the Ladyfield site and The Crichton. Discussions encapsulated aspects of the Vision & Principles which looked to frame the development of Ladyfield in the broader coastal, Crichton and town settings and how it could help strengthen a stronger sense of place through connectivity. Discussions covered a broad range of local and national policy objectives and how development could help to meet these, be it active travel, biodiversity, supporting the sustainability of heritage assets and how placemaking can foster a sense of community.

The afternoon session covered Transport and Infrastructure, with broad discussion around the constraints and opportunities of the existing road network and where new connections, particularly

focused around active travel, could facilitate a modal shift from private cars to sustainable modes of transport. A broad consensus was reached that a series of small scale interventions around Ladyfield could have a major impact on improving connectivity locally and for the wider town. It was agreed that national policy was geared towards streets as placemaking tools to make better communities. Parking numbers were a major discussion point and broad topics included how guidance could support reduced provision if alternative modes of travel were enhanced, which encourage different ways of living to support council objectives towards netzero by 2030. It was generally agreed that the local traffic situation was very different than when previous survey work was undertaken and the new data would likely support this view.

Day 2 focused around the topics of Sustainability, Housing and Community with much discussion on how Ladyfield could facilitate change economically, socially, environmentally and culturally to support national objectives. Discussions included how Ladyfield could be an exemplar and what would this constitute in terms of a new development of homes. Discussion also looked at how a housing development on the Ladyfield site could facilitate and provided support for diversifying the construction industry in the South of Scotland to meet local and national housing targets through local fabrication. The importance of a holistic approach to all aspects of house building and community making could support positive change. New models for design, delivery and governance would be important to achieving the ambition of The Crichton Trust and the masterplan.

### 3.4 Event 3 - Evolving Ladyfield, Developing Proposals

This event was held at Easterbrook Hall at The Crichton on Wednesday 24th August 2022 from 10.30am to 12 noon. The event was hosted by Collective Architecture, Raeburn Farquhar Bowen, Buro Happold, South of Scotland Community Housing (SoSCH) alongside The Crichton Trust.

Stakeholders in attendance were:

- Dumfries & Galloway Council Planning
- Elected Members from Dumfries & Galloway Council

This event focused on a briefing of the project and the work of the design team and The Crichton Trust to date. This included presenting outcomes of the previous engagement activities and events undertaken. The design team presented to the elected members the presentation boards prepared for the public engagement event later on the 24th August and answered questions put forward by their constituents.

### 3.5 Event 4 - Future Ladyfield, Next Steps

This event was held at Easterbrook Hall at The Crichton on Friday 14th October 2022 from 10.30am to 12 noon. The event was hosted by Collective Architecture, Raeburn Farquhar Bowen, South of Scotland Community Housing (SoSCH) alongside The Crichton Trust.

Stakeholders in attendance were:

- Dumfries & Galloway Council Property
- Dumfries & Galloway Council Planning
- NHS Dumfries & Galloway
- Scottish Futures Trust

This event focused on a briefing of the project and the work of the design team and The Crichton Trust in developing the masterplan. This included showing those in attendance the short film to be presented to the public on the masterplan process and next steps in addition to sharing outcomes of the previous engagement activities and events undertaken. The format was informal allowing any questions to be shared and answered in an open, engaging way.

# Appendix

## **4.0 Appendix**

- 4.1 Consultation Boards Event 1
- 4.2 Consultation Boards Event 2
- 4.3 Consultation Boards Event 3

All Consultation Boards are available to view, download and read in more detail at [ladyfield.info](http://ladyfield.info)



Project Funder



This project is funded by the UK Government through the UK Community Renewal Fund.

The UK Community Renewal Fund is a UK Government programme for 2021/22. This aims to support people and communities most in need across the UK to pilot programmes and new approaches to prepare for the UK Shared Prosperity Fund. It invests in skills, community and place, local business, and supporting people into employment.

For more information, visit:

<https://www.gov.uk/government/publications/uk-community-renewal-fund-prospectus>

Engagement Lead

**COLLECTIVE  
ARCHITECTURE**

Project Partners

